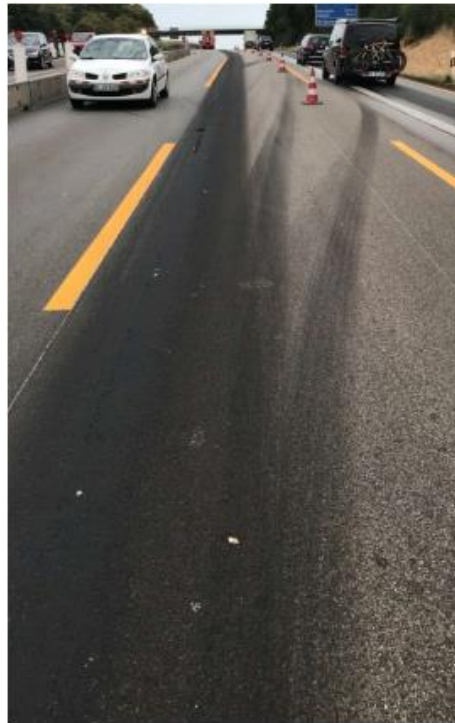


use of the ultra high pressure water technology on A7 bei Guxhagen

Autobahnmeisterei Baunatal:
Südkreuz Kassel A44 – A7

Two lanes had to be closed due to road damage due to enormous heat.

Due to the high outside temperatures, the balancing mass came from the expansion joints of the asphalt pavement and was distributed by the traffic on the road.



Requirements

- Start of operations fastest possible
- Cleaning the road
- Time pressure due to suspension in the main holiday period
- Remove grout
- Restoring the grip



Time-saving factors:

- High area performance output due to the world's largest working width of more than 3m
- Quick change of the front modules on the road:
twister for markingremoval to duo twister for
surface cleaning and retexturing
- Surface is almost dry immediately after cleaning,
so that post-processing is possible by return



Safety factors:

- Emergency Button: electrical evacuation mode by pressing only one button
- Ground waves and unevenness can be overdriven due to the unique electric stepless height adjustment for changing distance between the surface and the nozzles during the working process
- Distance between surface and suction hood is 15-80 mm
- Continuous extraction of loose and dangerous material such as stones, stainless steel or aluminium as well as dissolved rubber residues or simple soiling
- No backwater remains in the suction hood or on the surface
- Additional cooling process due to the the flow rate that is generated by an extremely large volume of air (appr. 15,000m³)

Cleaning performance

- Water jet hits directly on the surface to be cleaned and is immediately sucked off, so that no backwater remains, for a better cleaning result
- Homogeneous cleaning due to uniform jet
- Minimization of phantom effects
- Adaption to the respective requirement for a ceiling and joint protective use

Betriebsdruck		2 500 bar
DÜSENBERECHNUNG		
DÜSENTYP	ANZAHL	DÜSEN-Ø
P	16	0,25 mm ✕
P	12	0,3 mm ✕
+ Weitere Düse hinzufügen		
49,3 l/min Fördervolumen gesamt		
580 N Rückstoßkraft		
1 859 min ⁻¹ Drehzahl		

adaptable:

- nozzles: use of round or flat jet nozzles
- operating pressure: 1.500 – 3.500 bar
- by changing the distance between surface and nozzles through the unique electric stepless height adjustment during the working process the cleaning result can be influenced

Cleaning result: A7 bei Guxhagen



Cleaning result: A7 bei Guxhagen

before



after



before



after

Cleaning result: A7 bei Guxhagen

Exposure of former road markings



Cost-savings by using traffic-lines duo twister

- Less wear of nozzles and tools, as no water remains in the suction
- The modular system is upgradeable at any time and compatible with different front modules for versatile uses
- Water consumption without water reuse by water loop module 1,0-1,7l/m²
Water consumption with water reuse by water loop module 0,5-0,8l/m²
- Reduction of waste by using the unique water filtration system of the water loop module
- Reduction of cleaning times (by high surface performance)
- Reduction of staff (only one machine operator)



**Conclusion of the responsables of the authority
A7 bei Guxhagen:**

- **Short blocking time due to the very good cleaning result**
- **Quick and uncomplicated use of the traffic-lines duo twister**